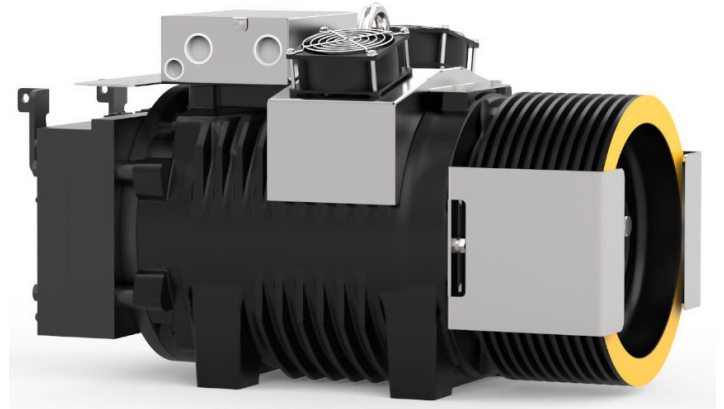


## SICOR SpA - Gearless Machines

Industry leaders offering the very latest innovation in lift gearless technology coupled with first class service and customer support. The production range of Sicor gearless machines covers loads up to 4.000kg in roping 2:1, speeds of up to 4m/s (other speeds on request) with traction sheaves 120 to 600mm.



### Patented Magnet Fixation

High performance magnets (NdFeB) with patented mechanical fixing technology to ensure correct positioning throughout operation. Magnets coated for extra corrosive protection. This gives increased life cycle when compared to industry standard form of uncoated magnets fixed by the traditional glued fixing method.



### Motor Winding

Sicor electromagnetic design allows fully automated winding manufacturing assuring consistent product quality. 20/28/30 Pole machines for optimal motor control



### Encoder

Heidenhain ECN1313 encoder supplied as standard. Wide range of other encoders available on request to match feedback for inverter. Encoder always recessed within the brake to prevent any type of damage, ensuring maximum compactness.

### Machine Casing

Cast iron machine case ensuring maximum strength, acoustic dampening and reduced vibration. Case with cooling fins to provide optimum heat exchange.

### Traction Sheave

Wide range of traction sheaves (diameter 120 ... 600 mm) made of hardened steel (hardness > 50HRC) or ductile iron EN-GJS-700-2-UNI EN 1563 (hardness > 250HB) can be easily removed.

### Brake

Mayr brake supplied as standard for ease of set up and maintenance. Brakes are certified according to the new Lift Directive 2014/33 / EU, EN81-20, EN81-50 as part of the protection system against overspeed for the car moving in upward direction and braking element against unintended car movement.



### Ventilation

Kit can be easily retro fitted to add ventilation at later date to improve performance of machine if the building usage changes.

### Bespoke Rafts

Raft design to accommodate Customer and site requirements.